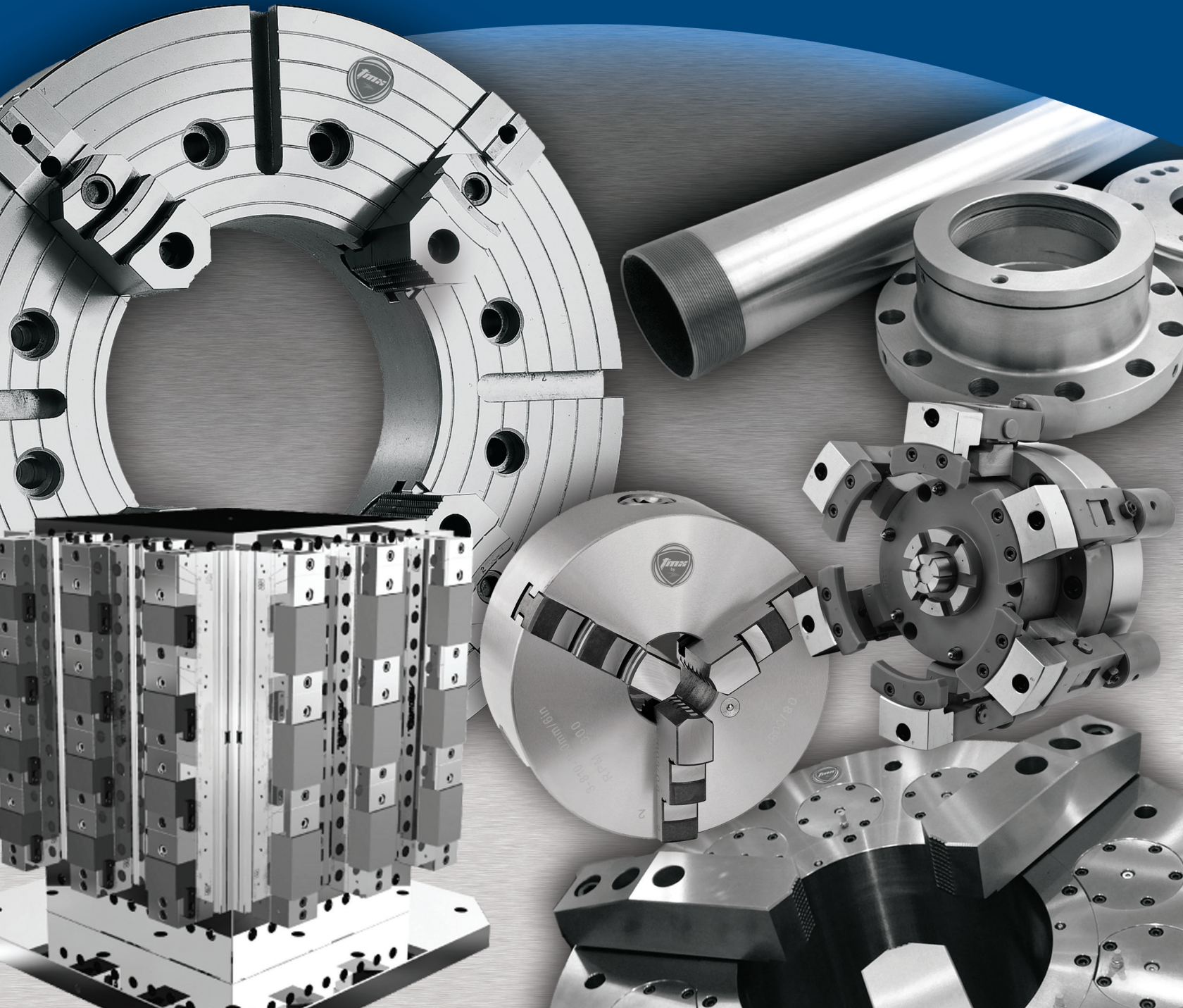


TMS

WORKHOLDING SOLUTIONS 

WORKHOLDING SOLUTIONS FOR: Haas Automation Inc.



For some four decades TMX Workholding Solutions has been engaged in the design, manufacturing and marketing of a complimentary line of workholding solutions for the machine tool industry. We have learned that the people who know about the needs and wants of the marketplace are the people who specify and purchase our products. That is why TMX Workholding Solutions has developed this catalog with you-the customer in mind.

THE SMART CHOICE

There is a difference in buying generic parts rather than buying a workholding solution designed specifically for your line. You know the old adage “miss by a mil, miss by a mile”. The TMX Workholding Solution team looks at your needs on an individual basis. We don’t believe in a “one size fits all” mentality.

THE PACKAGE DEAL

This catalog is the latest in a commitment to you-our valued customer. We as a company realize that you have a choice. We put an extra effort forward in proving that we are beyond a vendor, but rather a solution.



TOOLS FOR THE TRADE

MANUFACTURED FOR

Haas Automation Inc.

TABLE OF CONTENTS

LATHES

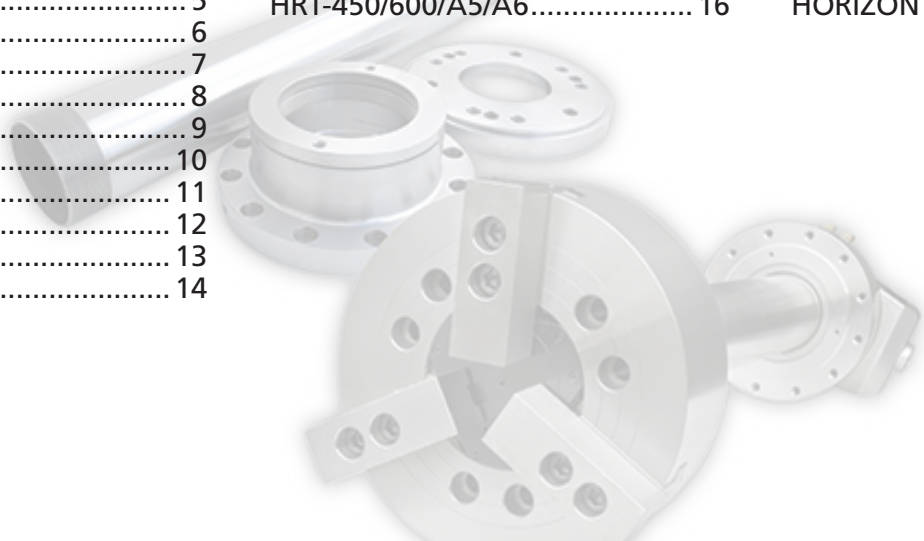
ST-10.....	4
ST-20.....	5
ST-25.....	6
ST-30.....	7
ST-35.....	8
ST-40.....	9
ST-45.....	10
ST-50.....	11
ST-55.....	12
TL-1/TL-2.....	13
TL-3/TL-3B	14

ROTARY TABLES

HRT-160/210/310.....	15
HRT-450/600/A5/A6.....	16

VICES - MILLS

VERTICAL (VF Series)	17
HORIZONTAL (EC Series)	18



ONE SOURCE. MANY SOLUTIONS.

WHY INVEST IN A TMX WORKHOLDING SOLUTION?

- Chuck packages are engineered specifically for each machine
- Chuck and Cylinder combination are optimized for peak performance
- Chuck upsizing; larger chucks are engineered to work with OE cylinder
- Dynamically balanced draw tube help reduce vibration at spindle
- Maximized through-hole capacities; high tensile draw tubes
- Proprietary yield, fatigue and tensile calculations ensure that draw tubes will stand the test of time
- All TMX Chucks and Cylinders are backed by a 2 year warranty

TMX WORKHOLDING SOLUTIONS

- OE TMX Replacement Chucks and Cylinders
- Upsizing Options; Chucks and Cylinders
- Complete Chuck and Cylinder Packages
- VTL Chuck Packages; up to 63'
- Front Actuated Air Chuck Packages (Oil Country)
- Engineered Solutions

ST-10



6" OEM CHUCK

#3-950-ST10-OER

TMX, 6", OEM Replacement Chuck, Open Center, Hyd. Chuck w/Threaded Draw Nut & A2-5 Adapter

Suggested Retail

\$1,905.00



8" UPSIZE CHUCK

#3-950-ST10-US

TMX, 8", Upsize Chuck, Open Center, Hyd. Chuck w/Threaded Draw Nut & A2-5 Adapter

Suggested Retail

\$2,300.00



6" QUICK CHANGE

#3-950-ST10-QC

TMX, 6", Quick-Jaw-Change Chuck, Open Center, Hyd. Chuck w/Threaded Draw Nut & A2-5 Adapter

Suggested Retail

\$5,280.00



QUICK CHANGE COLLET

#3-950-ST10-CC42

TMX, 42mm Capacity, Quick-Change, Dead Length, Collet Chuck, w/A2-5 Mount and Threaded Draw Nut

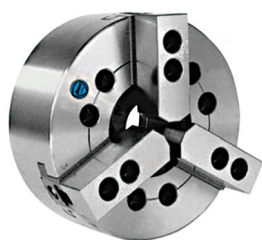
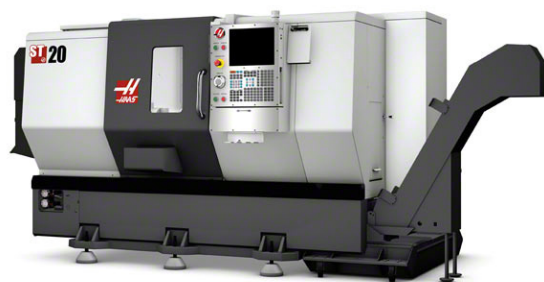
Suggested Retail

\$3,577.00

Also Available for the HAAS ST-10:

TMX Workholding Solutions offers additional workholding options for the ST-10 lathe including: 6-Jaw Chucks, Engineered Workholding Solutions, Manual Chucks, Rotating Fixtures, etc. Please contact for more information.

ST-20



8" OEM CHUCK

#3-950-ST20-OER

TMX, 8", OEM Replacement Chuck, 2" Cap., Open Center, Hyd. Chuck w/ Threaded Draw Nut & A2-6 Mount

Suggested Retail

\$2,450.00



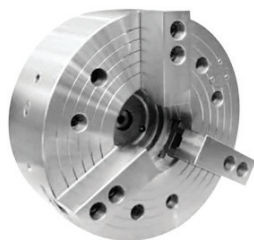
10" UPSIZE CHUCK

#3-950-ST20-US

TMX, 10", Upsize Chuck, Open Center, Hyd. Chuck w/Threaded Draw Nut & A2-6 Mount(Replaces OE Chuck)

Suggested Retail

\$3,209.00



8" QUICK CHANGE

#3-950-ST20-QC

TMX, 8", Quick-Jaw-Change Chuck, Open Center, Hyd. Chuck w/Threaded Draw Nut & A2-6 Mount

Suggested Retail

\$6,188.00



QUICK CHANGE COLLET

#3-950-ST20-CC52

TMX, 52mm Quick-Change, Collet Chuck Package; Collet Chuck, Threaded Draw Nut, Quick Change Tool and 1 Size Collet

Suggested Retail

\$4,599.00

Also Available for the HAAS ST-20:

TMX Workholding Solutions offers additional workholding options for the ST-20 lathe including: 6-Jaw Chucks, Engineered Workholding Solutions, Manual Chucks, Rotating Fixtures, etc. Please contact for more information.

ST-25



10" OEM CHUCK

#3-950-ST25-OER

TMX, 10", OEM Replacement Chuck, w/
Threaded Draw Nut & A2-6 Mount

Suggested Retail

\$3,380.00



12" UPSIZE CHUCK

#3-950-ST25-12US

TMX, 12", Upsize Chuck, Open Center,
Hyd. Chuck w/Threaded Draw Nut & A2-6
Mount

Suggested Retail

\$3,788.00



10" QUICK CHANGE

#3-950-ST25-12QC

TMX, 10", Quick-Jaw-Change Chuck,
Open Center, Hyd. Chuck w/Threaded
Draw Nut & A2-6 Mount

Suggested Retail

\$8,533.00



QUICK CHANGE COLLET

#3-950-ST25-CC65

TMX, 65mm Quick-Change, Collet Chuck
Package; Collet Chuck, Threaded Draw
Nut, Quick Change Tool and 1 Size Collet

Suggested Retail

\$5,112.00

Also Available for the HAAS ST-25:

TMX Workholding Solutions offers additional workholding options for the ST-25 lathe including: 6-Jaw Chucks, Engineered Workholding Solutions, Manual Chucks, Rotating Fixtures, etc. Please contact for more information.

ST-30



10" OEM CHUCK

#3-950-ST30-OER

TMX, 10", OEM Replacement Chuck, w/
Threaded Draw Nut & A2-6 Mount



Suggested Retail

\$3,380.00

12" UPSIZE CHUCK

#3-950-ST30-12US

TMX, 12", Upsize Chuck, Open Center,
Hyd. Chuck w/Threaded Draw Nut & A2-6
Mount



Suggested Retail

\$3,788.00

10" QUICK CHANGE

#3-950-ST30-12QC

TMX, 10", Quick-Jaw-Change Chuck,
Open Center, Hyd. Chuck w/Threaded
Draw Nut & A2-6 Mount



Suggested Retail

\$8,533.00

QUICK CHANGE COLLET

#3-950-ST30-CC65

TMX, 65mm Quick-Change, Collet Chuck
Package; Collet Chuck, Threaded Draw
Nut, Quick Change Tool and 1 Size Collet



Suggested Retail

\$5,112.00

Also Available for the HAAS ST-30:

TMX Workholding Solutions offers additional workholding options for the ST-30 lathe including: 6-Jaw Chucks, Engineered Workholding Solutions, Manual Chucks, Rotating Fixtures, etc. Please contact for more information.

ST-35



12" OEM CHUCK

#3-950-ST35-OER

TMX, 12", Open Center, Hyd. Chuck w/
Threaded Draw Nut & A2-8 Mount

Suggested Retail

\$4,399.00



15" UPSIZE CHUCK

#3-950-ST35-15US

TMX, 15", Upsize Chuck, Open Center,
Hyd. Chuck w/Threaded Draw Nut & A2-8
Mount

Suggested Retail

\$5,877.00



12" QUICK CHANGE

#3-950-ST35-QC

TMX, 12", Quick-Jaw-Change Chuck,
Open Center, Hyd. Chuck w/Threaded
Draw Nut & A2-8 Mount

Suggested Retail

\$11,978.00

Also Available for the HAAS ST-35:

TMX Workholding Solutions offers additional workholding options for the ST-35 lathe including: 6-Jaw Chucks, Engineered Workholding Solutions, Manual Chucks, Rotating Fixtures, etc. Please contact for more information.

ST-40



15" OEM CHUCK

#3-950-ST40-OER

TMX, 15", Open Center, Hyd. Chuck w/ Threaded Draw Nut & A2-8 Mount

Suggested Retail

\$5,877.00



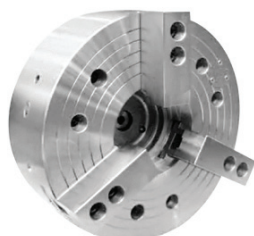
18" UPSIZE CHUCK

#3-950-ST40-18US

TMX, 18" Upsize Chuck, Open Center, Hyd. Chuck w/ Threaded Draw Nut & A2-8 Mount (Drop-In Replacement for OE Chuck)

Suggested Retail

\$8,899.00



15" QUICK CHANGE

#3-950-ST40-QC

TMX, 15", Quick-Jaw-Change Chuck, Open Center, Hyd. Chuck w/Threaded Draw Nut & A2-8 Mount

Suggested Retail

\$8,900.00



15" CHUCK PACKAGE

#3-950-ST40-15

TMX, 15", 4.055" cap., Open Center, Hyd. Chuck Package (Incl. Chuck, Chuck Adapter, Drawtube, Cylinder Adapter, Hyd. Cylinder, Hoses and Ftgs)

Suggested Retail

\$17,553.00



18" CHUCK PACKAGE

#3-950-ST40-18US

TMX, 18", 4.055" cap., Open Center, Hyd. Chuck Package (Incl. Chuck, Chuck Adapter, Drawtube, Cylinder Adapter, Hyd. Cylinder, Hoses and Ftgs)

Suggested Retail

\$18,999.00

Also Available for the HAAS ST-40:

TMX Workholding Solutions offers additional workholding options for the ST-40 lathe including: 6-Jaw Chucks, Engineered Workholding Solutions, Manual Chucks, Rotating Fixtures, etc. Please contact for more information.

ST-45



18" OEM CHUCK

#3-950-ST45-OER

TMX, 18", 6.5" Cap., Open Center, Hyd. Chuck w/Threaded Draw Nut & A2-11

Suggested Retail

\$10,773.00



21" UPSIZE CHUCK

#3-950-ST45-21US

TMX, 21", 6.5" Cap., Open Center, Hyd. Chuck w/Threaded Draw Nut & A2-11

Suggested Retail

\$13,552.00



18" CHUCK PACKAGE

#3-950-ST45-18

TMX, 18", Open Center 6.55" Bore, Hyd. Chuck Package (Incl. Chuck, Chuck Adapter, Drawtube, Cylinder Adapter, Hyd. Cylinder & Coolant Collector)

Suggested Retail

\$34,898.00



21" CHUCK PACKAGE

#3-950-ST45-21

TMX, 21", Open Center 6.55" Bore, Hyd. Chuck Package (Incl. Chuck, Chuck Adapter, Drawtube, Cylinder Adapter, Hyd. Cylinder & Coolant Collector)

Suggested Retail

\$37,665.00



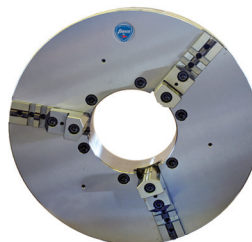
20" INDEPENDENT

#3-950-ST45-20OC4

TMX, 20", 4-jaw, Independent, Forged Steel, Oil Country Chuck w/A2-11 Direct Mount

Suggested Retail

\$5,152.00



20" SCROLL CHUCK

#3-950-ST45-20OC3

TMX, 20", 3-jaw, Scroll, Forged Steel, Oil Country Chuck w/A2-11 Direct Mount

Suggested Retail

\$9,308.00

ST-50



21" CHUCK PACKAGE

#3-950-ST50-21

TMX 21", Open Center 7.0" Bore, Hyd. Chuck Package (Incl. Chuck, Chuck Adapter, Drawtube, Cylinder Adapter, Hyd. Cylinder & Coolant Collector)



Suggested Retail

\$49,883.00

24" CHUCK PACKAGE

#3-950-ST50-24

TMX 24", Open Center 8.0" Bore, Hyd. Chuck Package (Incl. Chuck, Chuck Adapter, Drawtube, Cylinder Adapter, Hyd. Cylinder & Coolant Collector)



Suggested Retail

\$55,442.00

20" SCROLL-IND. PAIR

#3-950-ST50-20OCFR

(2) TMX, 20", Forged Steel, Oil Country Chucks w/A2-15 Direct Mounts (3-jaw front and 4-jaw, Independent rear)



Suggested Retail

\$19,883.00

20" AIR-IND. PAIR

#3-950-ST50-20ACM

TMX, 20", Front-Actuated, Pneumatic Chuck and Forged Steel, Oil Country, Manual Chuck w/A2-15 Direct Mount on rear (all mounting hardware included for Pneumatic chuck)



Suggested Retail

\$45,669.00

20" AIR PAIR

#3-950-ST50-20AC2

(2) TMX, 20", Front-Actuated, Pneumatic Chucks front and rear (all mounting hardware included for Pneumatic chuck)



Suggested Retail

\$69,335.00

Also Available for the HAAS ST-50:

TMX Workholding Solutions offers additional workholding options for the ST-50 lathe including: 6-Jaw Chucks, Engineered Workholding Solutions, Manual Chucks, Rotating Fixtures, etc. Please contact for more information.

ST-55



24" CHUCK PACKAGE

#3-950-ST55-24

TMX, 24", Open Center 8.0" Bore, Hyd. Chuck Package (Incl. Chuck, Chuck Adapter, Drawtube, Cylinder Adapter, Hyd. Cylinder & Coolant Collector)



Suggested Retail

\$55,442.00

25" SCROLL-IND. PAIR

#3-950-ST55-25

(2) TMX, 25", Forged Steel, Oil Country Chucks w/A2-20 Direct Mounts (3-jaw front and 4-jaw, Independent rear)



Suggested Retail

\$25,661.00

25" AIR-IND. PAIR

#3-950-ST55-25ACM

TMX, 25", Front-Actuated, Pneumatic Chuck and Forged Steel, Oil Country, Manual Chuck w/A2-20 Direct Mount on rear (all mounting hardware included for Pneumatic chuck)



Suggested Retail

\$56,772.00

25" AIR PAIR

#3-950-ST55-27

(2) TMX, 25", Front-Actuated, Pneumatic Chucks front and rear (all mounting hardware included for Pneumatic chuck)



Suggested Retail

\$82,505.00

20" AIR PAIR

#3-950-ST55-AA

(2) TMX, 20", Front-Actuated, Pneumatic Chucks front and rear (all mounting hardware included for Pneumatic chuck)



Suggested Retail

\$3,477.00

Also Available for the HAAS ST-55:

TMX Workholding Solutions offers additional workholding options for the ST-55 lathe including: 6-Jaw Chucks, Engineered Workholding Solutions, Manual Chucks, Rotating Fixtures, etc. Please contact for more information.

TL-1

TL-2



*6-Jaw Chucks available upon request.

8" 3-JAW SCROLL

#3-950-TL1-OER

8", 3-Jaw, Forged Steel, Set-Tru, Scroll Chuck with A2-5 Adapter



Suggested Retail

\$1,650.00

10" 3-JAW SCROLL

#3-950-TL2-OER

10", 3-Jaw, Forged Steel, Set-Tru, Scroll Chuck with A2-6 Adapter



Suggested Retail

\$1,900.00

8" 4-JAW SCROLL

#3-950-TL1-4S

8", 4-Jaw, Forged Steel, Set-Tru, Scroll Chuck with A2-5 Adapter



Suggested Retail

\$1,750.00

10" 4-JAW SCROLL

#3-950-TL2-4S

10", 4-Jaw, Forged Steel, Set-Tru, Scroll Chuck with A2-6 Adapter



Suggested Retail

\$2,100.00

8" INDEPENDENT

#3-950-TL1-4I

8", 4-Jaw, Forged Steel, Independent Chuck with A2-5 Adapter



Suggested Retail

\$1,650.00

10" INDEPENDENT

#3-950-TL2-4I

10", 4-Jaw, Forged Steel, Independent Chuck with A2-6 Adapter



Suggested Retail

\$1,900.00

TL-3

TL-3B



*6-Jaw Chucks available upon request.



12" 3-JAW SCROLL

#3-950-TL3-OER

12", 3-Jaw, Forged Steel, Set-Tru, Scroll Chuck with A2-6 Adapter

Suggested Retail

\$2,400.00



25" 3-JAW SCROLL

#3-950-TL3B-3J

25", 3-Jaw, Forged Steel, Set-Tru, Scroll Chuck, A2-15

Suggested Retail

\$8,900.00



12" 4-JAW SCROLL

#3-950-TL3-4S

12", 4-Jaw, Forged Steel, Set-Tru, Scroll Chuck with A2-6 Adapter

Suggested Retail

\$2,550.00



25" INDEPENDENT

#3-950-TL3B-4J

25", 4-Jaw, Forged Steel, Independent Chuck with A2-15

Suggested Retail

\$8,600.00



12" INDEPENDENT

#3-950-TL3-4I

12", 4-Jaw, Forged Steel, Independent Chuck with A2-6 Adapter

Suggested Retail

\$2,400.00



25" SCROLL-IND. PAIR

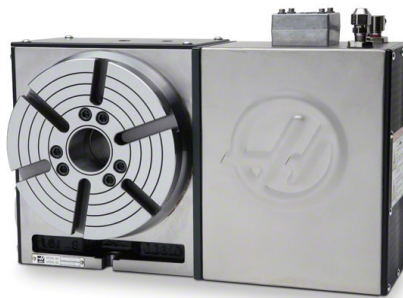
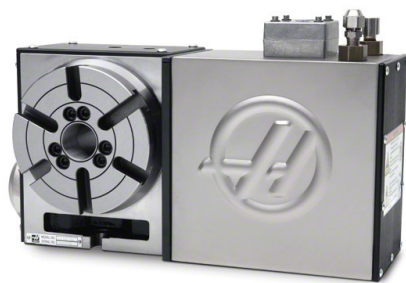
#3-950-TL3B-F/R

25" 3-Jaw, Forged Steel ScrollChuck, A2-15 on Front and 25", 4-Jaw, Independent, A2-15 on Rear

Suggested Retail

\$17,500.00

HRT-160/210



*4-Jaw and 6-Jaw Chucks available upon request.

6" SCROLL CHUCK

#3-950-HRT160-TS

6", 3-Jaw, Forged Steel Body, Set Tru Chuck, Adapter Plate, T-Nuts and Bolts



Suggested Retail

\$1,250.00

8" SCROLL CHUCK

#3-950-HRT210-TS

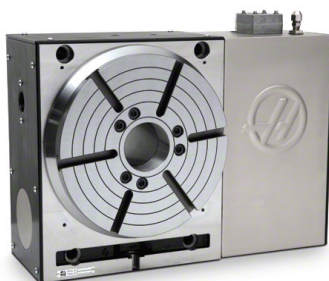
8", 3-Jaw, Forged Steel Body, Set Tru Chuck, Adapter Plate, T-Nuts and Bolts



Suggested Retail

\$1,650.00

HRT-310



*4-Jaw and 6-Jaw Chucks available upon request.

10" SCROLL CHUCK

#3-950-HRT310-TS10

10", 3-Jaw, Forged Steel Body, Set Tru Chuck, Adapter Plate, T-Nuts and Bolts



Suggested Retail

\$1,950.00

12" SCROLL CHUCK

#3-950-HRT310-TS

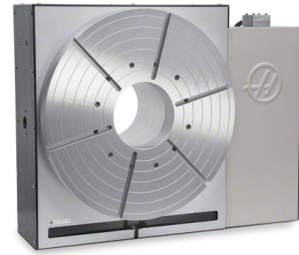
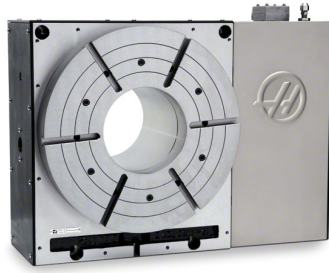
12", 3-Jaw, Forged Steel Body, Set Tru Chuck, Adapter Plate, T-Nuts and Bolts



Suggested Retail

\$2,450.00

HRT-450/600



*4-Jaw and 6-Jaw Chucks available upon request.

16" SCROLL CHUCK

#3-950-HRT450-TS



16", 3-Jaw, Forged Steel Body, Set Tru Chuck, Adapter Plate, T-Nuts and Bolts

Suggested Retail

\$3,350.00

20" SCROLL CHUCK

#3-950-HRT600-TS

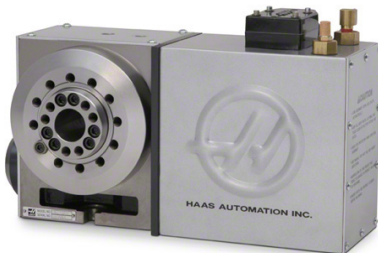


20", 3-Jaw, Forged Steel Body, Set Tru Chuck, Adapter Plate, T-Nuts and Bolts

Suggested Retail

\$7,100.00

HRT-A5



HRT-A6



*4-Jaw and 6-Jaw Chucks available upon request.

6" SCROLL CHUCK

#3-950-HRTA5-TS



6", 3-Jaw, Forged Steel Body, Set Tru Chuck, A2-5 Adapter Plate, T-Nuts and Bolts

Suggested Retail

\$1,350.00

8" SCROLL CHUCK

#3-950-HRTA6-TS

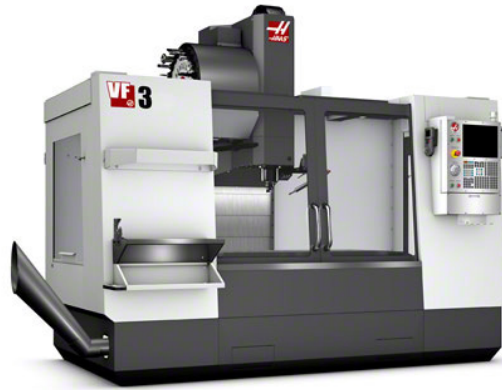


8", 3-Jaw, Forged Steel Body, Set Tru Chuck, A2-6 Adapter Plate, T-Nuts and Bolts

Suggested Retail

\$1,800.00

Vertical Mills



*All vises shown are compatible with Haas VF series Vertical Mills.

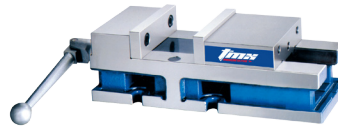
6" MACHINE VISE

#3-227-006

6", Precision CNC Milling Machine Vise

Suggested Retail

\$945.00



MACHINE VISE



DOUBLE STATION VISE

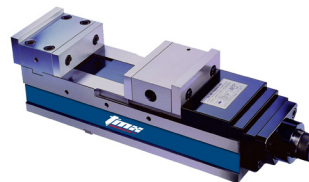
4" MACHINE VISE

#3-227-004

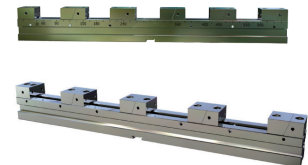
6", Precision CNC Milling Machine Vise

Suggested Retail

\$850.00



MECHANICAL POWER VISE



WELL VISE

6" MECHANICAL POWER VISE

#3-225-006

6" Sealed, "Anti-Lift" Mechanical Power Vise w/ Force Adjustable System

Suggested Retail

\$1,935.00

8" MECHANICAL POWER VISE

#3-225-008

8" Sealed, "Anti-Lift" Mechanical Power Vise w/ Force Adjustable System

Suggested Retail

\$2,430.00

4" DOUBLE STATION VISE

#3-224-004

4", "Anti-Lift", Precision, Double Station Vises w/6 Different Clamp Positions

Suggested Retail

\$1,740.00

3" WELL VISE

#3-228-2240

Flexible Multi-Station Well Vise w/ Quick Jaw Adjustment

Suggested Retail

\$2,460.00

6" DOUBLE STATION VISE

#3-224-006

6", "Anti-Lift", Precision, Double Station Vises w/6 Different Clamp Positions

Suggested Retail

\$1,855.00

Horizontal Mills



EC-400
EC-400PP
EC-500
EC-1600

TOMBSTONE, 6" (4x4x2)

#3-950-HRT310-TS10

4 sided Tombstone w/4 Dual Station, 6" Wide Lockwell Vises and Baseplate

Suggested Retail

\$8,500.00

TOMBSTONE, 4" (4x4x2)

#3-950-HRT310-TS10

4 sided Tombstone w/4 Dual Station, 4" Wide Lockwell Vises and Baseplate

Suggested Retail

\$8,000.00

TOMBSTONE, 3" (4x12x3)

#3-950-HRT310-TS10

4 sided Tombstone w/12 Triple Station, 3" Wide, Rail Vises and Baseplate

Suggested Retail

\$31,288.00

TOMBSTONE, 6" (6x6x2)

#3-950-HRT310-TS10

6 sided Tombstone w/6 Dual Station, 6" Wide, Rail Vises and Baseplate

Suggested Retail

\$12,500.00

TOMBSTONE, 3" (6x18x3)

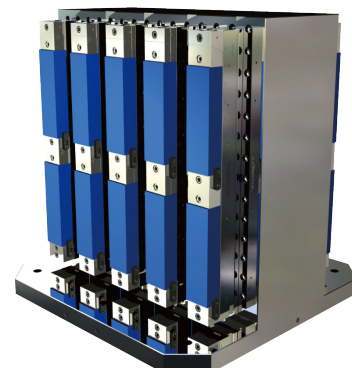
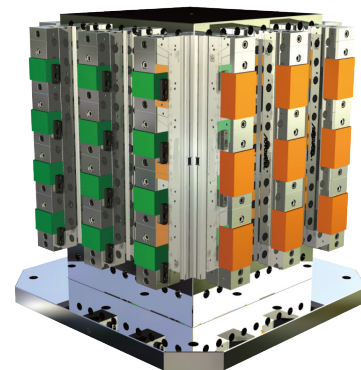
#3-950-HRT310-TS10

6 sided Tombstone w/18 Triple Station, 3" Wide, Rail Vises and Baseplate

Suggested Retail

\$41,884.00

TOMBSTONE, 6" (4x4x2)	●	●	●	
TOMBSTONE, 4" (4x4x2)	●			
TOMBSTONE, 3" (4x12x3)	●	●	●	●
TOMBSTONE, 6" (6x6x2)		●	●	●
TOMBSTONE, 3" (6x18x3)				●





WWW.TMXWORKHOLDING.COM • 1-855-TMX-CHCK

TMX Workholding Headquarters

**1835 Wallace Avenue
St. Charles, IL 60174**

Toolmex Regional Facility

**2015 S. Mitchell Boulevard
Schaumburg, IL 60193**

Toolmex Corporate Headquarters

**1075 Worcester Street
Natick, MA 01760**